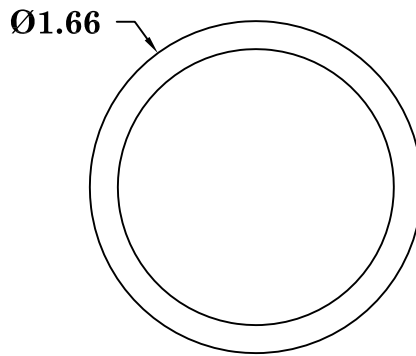


REVISIONS

ZONE	REV	DESCRIPTION	DATE	APPROVED
------	-----	-------------	------	----------



<p>Alloy 6005A-T61                  Metal: .140" typ.                  Est. Wt. .804 #/ft.                  PPI 5.22 in.                  Industry Standard tolerances</p>	<p><b>Brunner Enterprises™ Inc</b></p>			
	<p>455 Center Road, West Seneca, NY 14224                  (877) 299-2622 toll-free (716) 712-0183 fax                  www.brunnerent.com</p>			
	SIZE	FSCM NO.	DWG NO. <b>R276</b>	REV
	SCALE 1:1		SHEET	

# Specification

This material specification was copied by:

*Brunner Enterprises™ Inc.*  
455 Center Road  
West Seneca, NY 14224

Source of data:

Revere Copper & Brass

## 6005A-T61 Properties

### Chemical Composition (%):

Si————	.50-.90	Cr----	.30 max	Zn————	.10 max
Mg —————	.40-.70	Cu—	.30 max	Others —	.15 total max
Fe————-	.35 max	Mn—	.50 max		
Remainder Aluminum					

### Mechanical Properties:

Webster Hardness:	15	
Ultimate Tensile Strength:	38.0 ksi	
Yield Tensile Strength:	35.0 ksi	
Fatigue Strength:	12.3 ksi	500,000,000 Cycles
Shear Strength:	25.8 ksi	
Shear Modulus:	3760 ksi	
Modulus of Elasticity:	10000 ksi	Average of Tension and Compression
Poisson's Ratio	.33	
Machinability	50	Percent Tile of Aluminum Alloys

### Physical Properties:

Density: .0975 lb/in

### Thermal Properties:

Melting Point: 1080-1210 °F  
Heat Capacity: .215 BTU/lb-°F

The proceeding data are presented as information only and in no way guarantees minimum or maximum data for the purposes of design by *Brunner Enterprises™ Inc.* or any of its suppliers.

455 Center Road  
West Seneca, NY 14224  
Phone (716) 712-0180 Toll Free (877) 299 2622 Fax (716) 712-0183